



Typical Grit removal system at Brecon. (Courtesy of Welsh Water)

- ◆ Efficient removal of both faecal and vegetable matter resulting in a cleaner grit with considerably lower organic content.
- ◆ Low cost and low energy use.
- ◆ Compact design.
- ◆ High efficiency - takes full advantage of gravitational settlement.
- ◆ Simple, low rotating paddle mechanism, easy to maintain.
- ◆ 95% removal of grit greater than 315 microns in size with an S.G.>2.65
- 85% removal of grit greater than 210 microns in size with an S.G.>2.65
- 65% removal of grit greater than 140 microns in size with an S.G.>2.65
- ◆ Intake capacities from 100 m³/hour up to and including 18,000cu.m/hour.

A combined package of screening and grit removal is a pre-requisite of wastewater treatment to make the ongoing effluent a manageable and consistent medium entering the next phase of treatment.

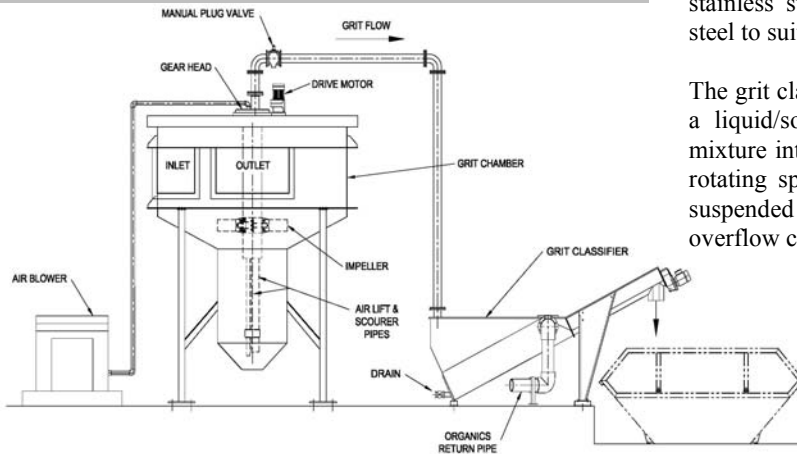
The Grit Star grit removal system is designed to provide the highest grit removal performance possible.

The 270 degree or 360 degree Grit Star grit removal system comprises a compact, circular trap located in the head works of the wastewater treatment plant. Each grit chamber comprises: geared motor driven drive head, impeller, impeller drive tube, grit pump/blower and connecting pipework to the washing/classification and de-watering plant.

The grit removal device has less than 6mm (270 degrees) or 152mm (360 degrees) headloss. No moving parts, subject to wear or stoppage, are sited below the water surface. An integral scouring/fluidising line is provided to clean or fluidise the grit before extraction. All drives, lubrication points and bearings are readily accessible from the walkway above the bridge level. The impeller is positioned immediately above the grit collection hopper, rotated by a drive tube to optimise velocity and maximise the removal of faecal and vegetable matter in the grit chamber.

The grit removal system can be provided to operate in a pre-cast concrete trap (provided by others) or we can provide a fabricated tank in stainless steel or shot blasted and painted mild steel to suit clients requirements.

The grit classifier is designed and sized to receive a liquid/solid mixture, settle solids out of the mixture into a trough and convey the solids via a rotating spiral to a discharge point. Water and suspended solids exit the unit through an overflow chamber.



In line with Company Policy of continuous product development, Adams reserve the right to modify any specification, dimension or design.

Telephone: 01709 763221
Facsimile: 01709 763238
Email: sales@adamshydraulics.co.uk

Adams Hydraulics Ltd, Unit 21 Manvers
House, Pioneer Close, Wath upon Dearne,
Rotherham, S63 7JZ.